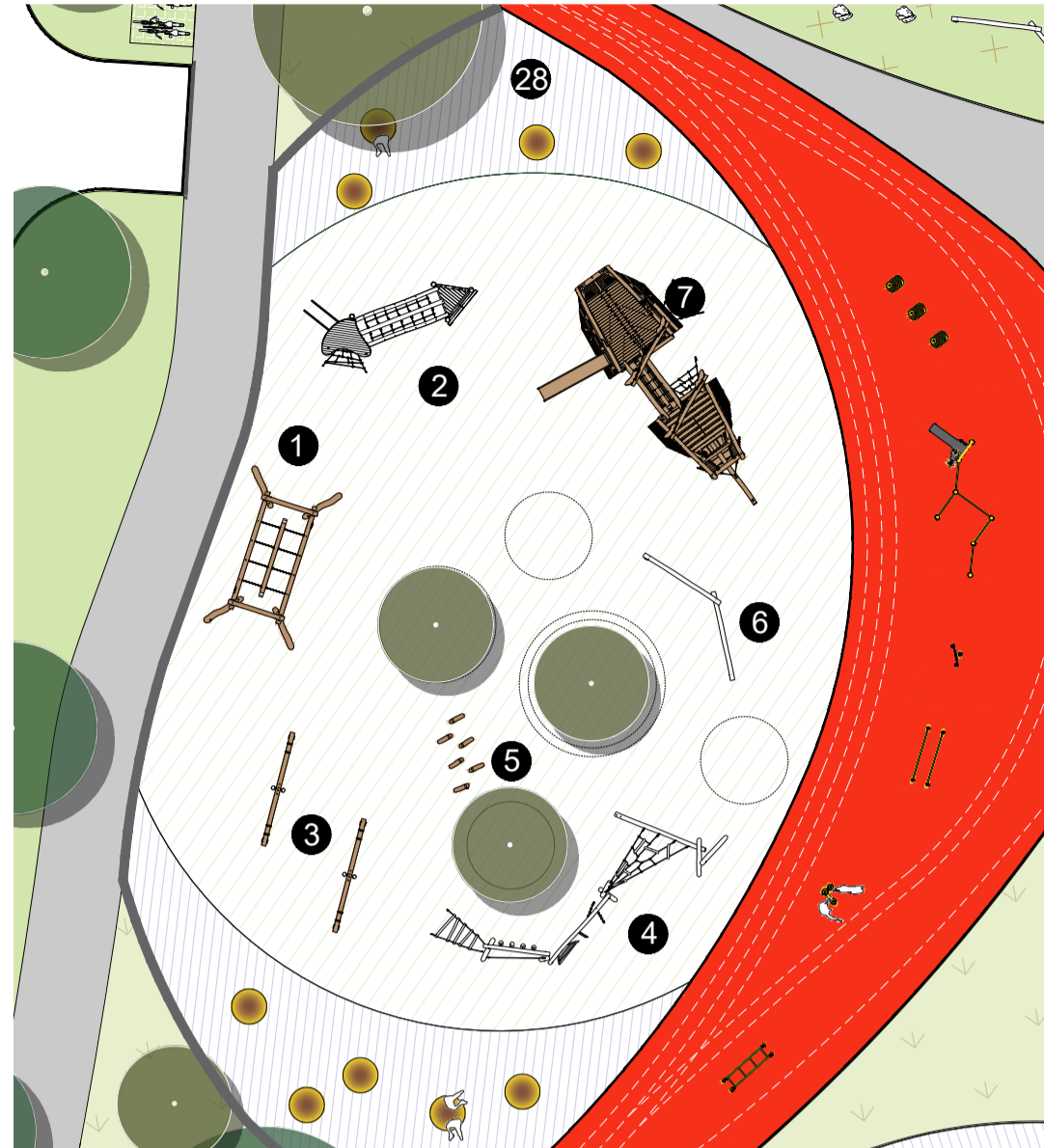
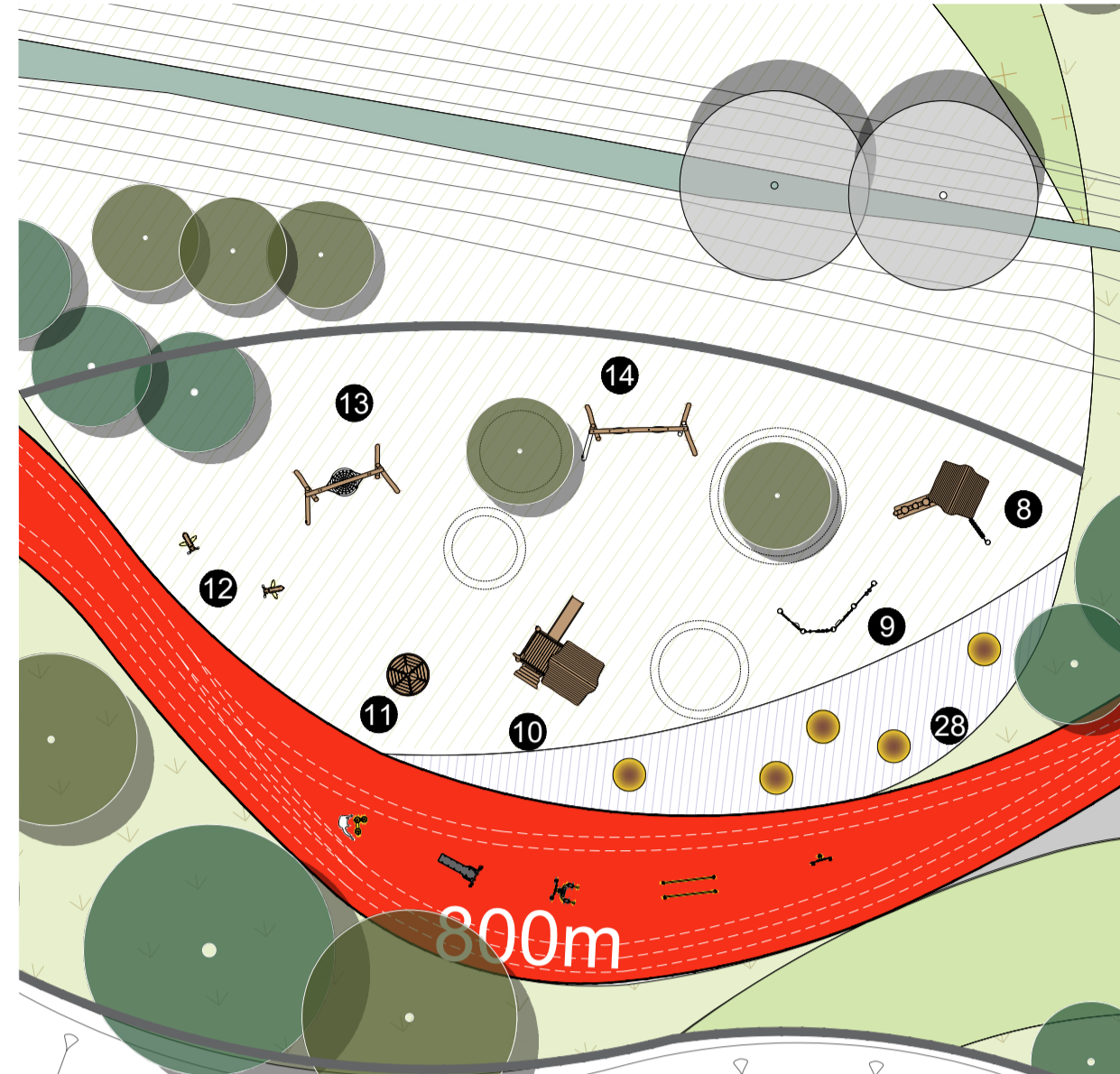


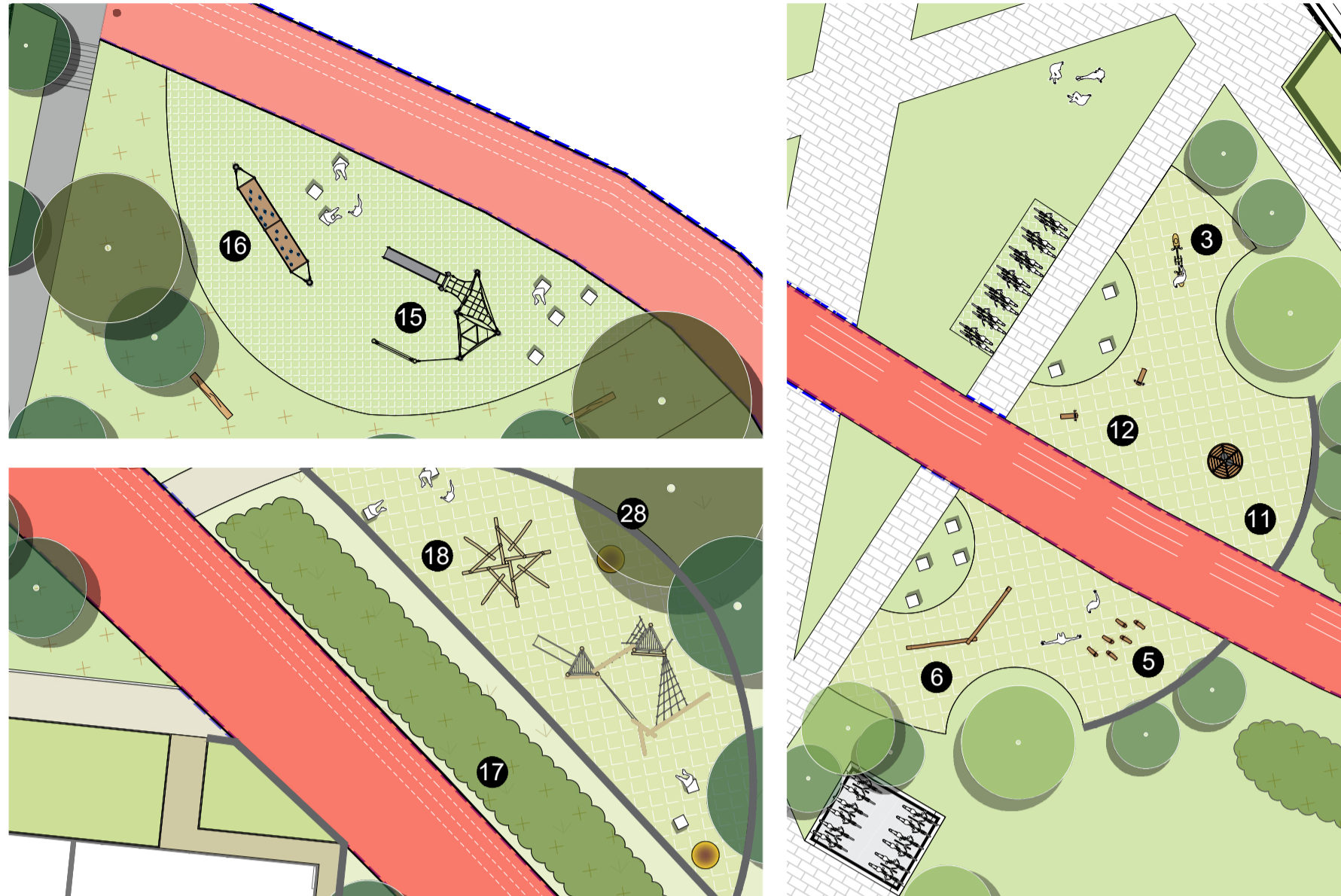
**A. EQUIPPED AREA FOR PLAY AT PARK @1:250**



**B. EQUIPPED AREA FOR PLAY AT PARK @1:250**



**C. TYPICAL EQUIPPED AREA FOR PLAY AT ARCHITECTURAL CHARACTER AREAS @1:250**

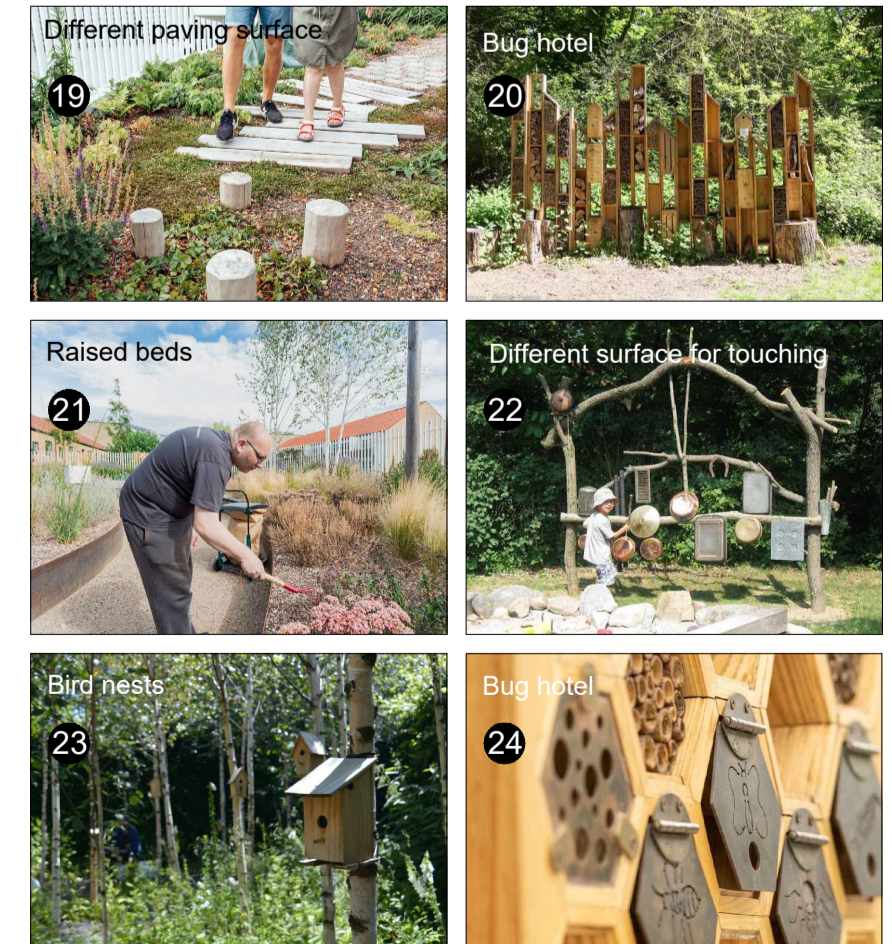
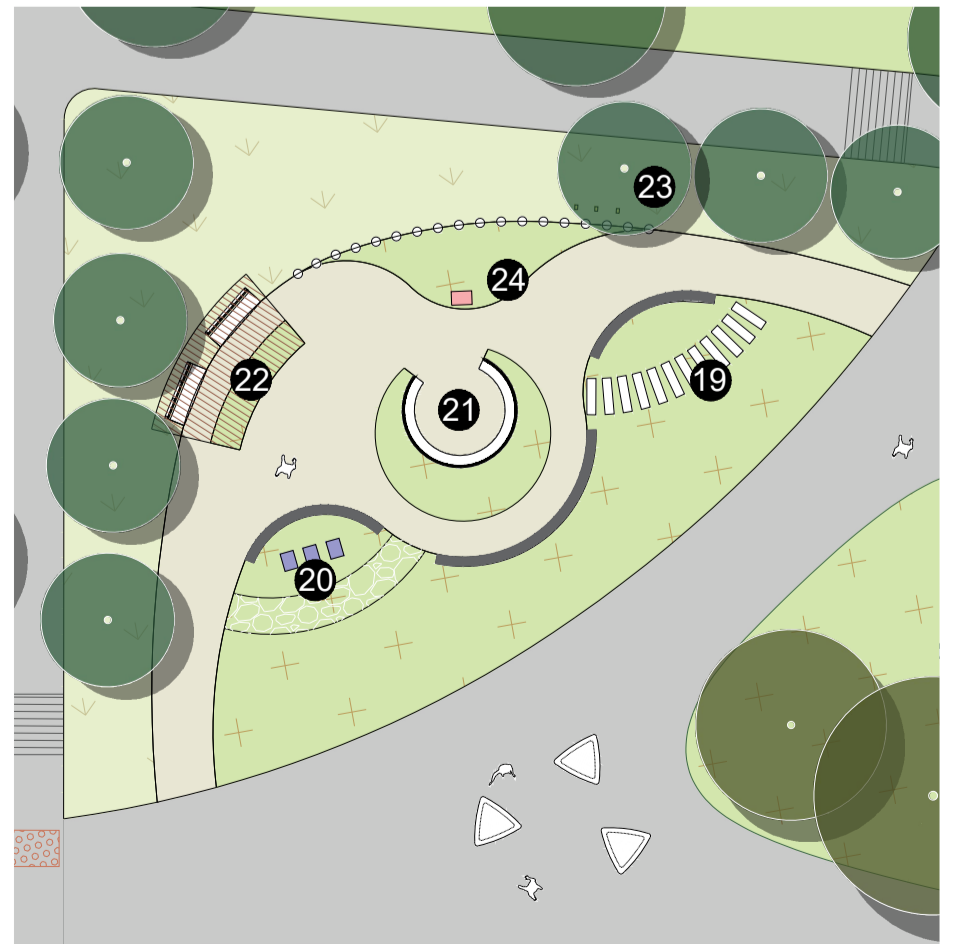


<p><b>Agility Package 30</b> 15</p> <p>General Product Information:                  Colour options: 01, 02, 03, 04, 05                  Dimensions (LxWxH): 3000x1500x1500                  Age group: 3-12                  Max capacity (users): 10</p>	<p><b>Climbing Ramp</b> 16</p> <p>General Product Information:                  Colour options: 01, 02, 03, 04, 05                  Dimensions (LxWxH): 2000x1000x1500                  Age group: 3-12                  Max capacity (users): 10</p>
<p><b>Two Towers with Overhead Handholds</b> 17</p> <p>General Product Information:                  Colour options: 01, 02, 03, 04, 05                  Dimensions (LxWxH): 3000x1500x1500                  Age group: 3-12                  Max capacity (users): 10</p>	<p><b>Crawling Pyramid</b> 18</p> <p>General Product Information:                  Colour options: 01, 02, 03, 04, 05                  Dimensions (LxWxH): 2000x1000x1500                  Age group: 3-12                  Max capacity (users): 10</p>

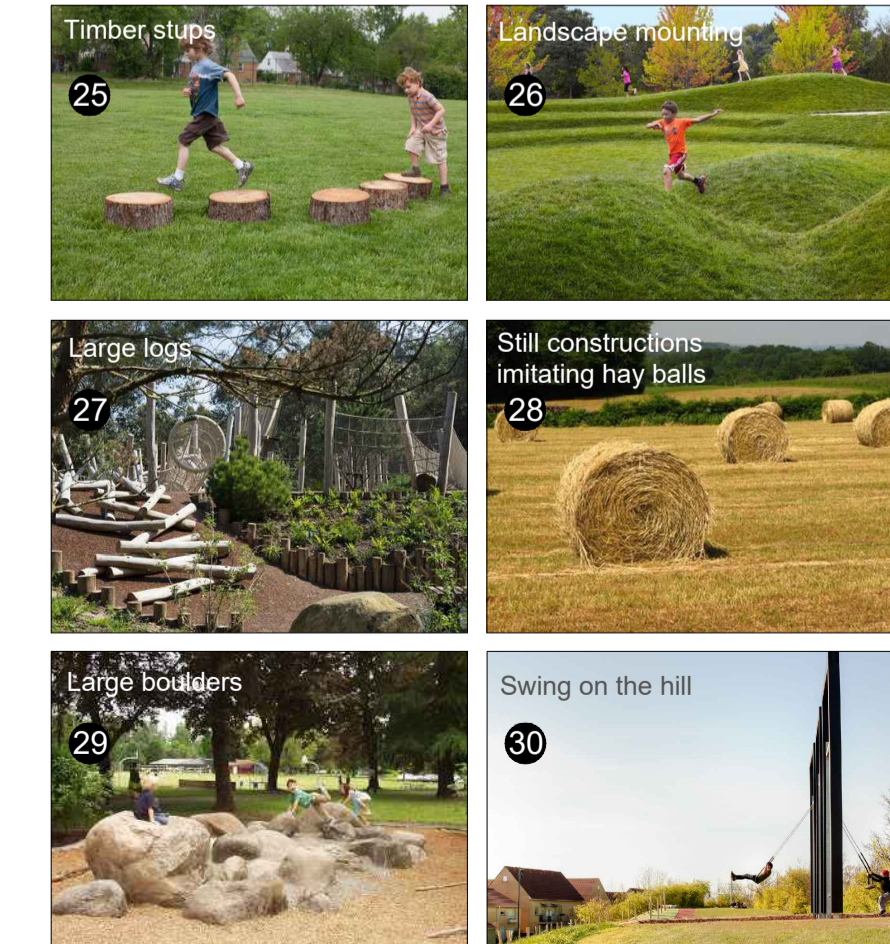
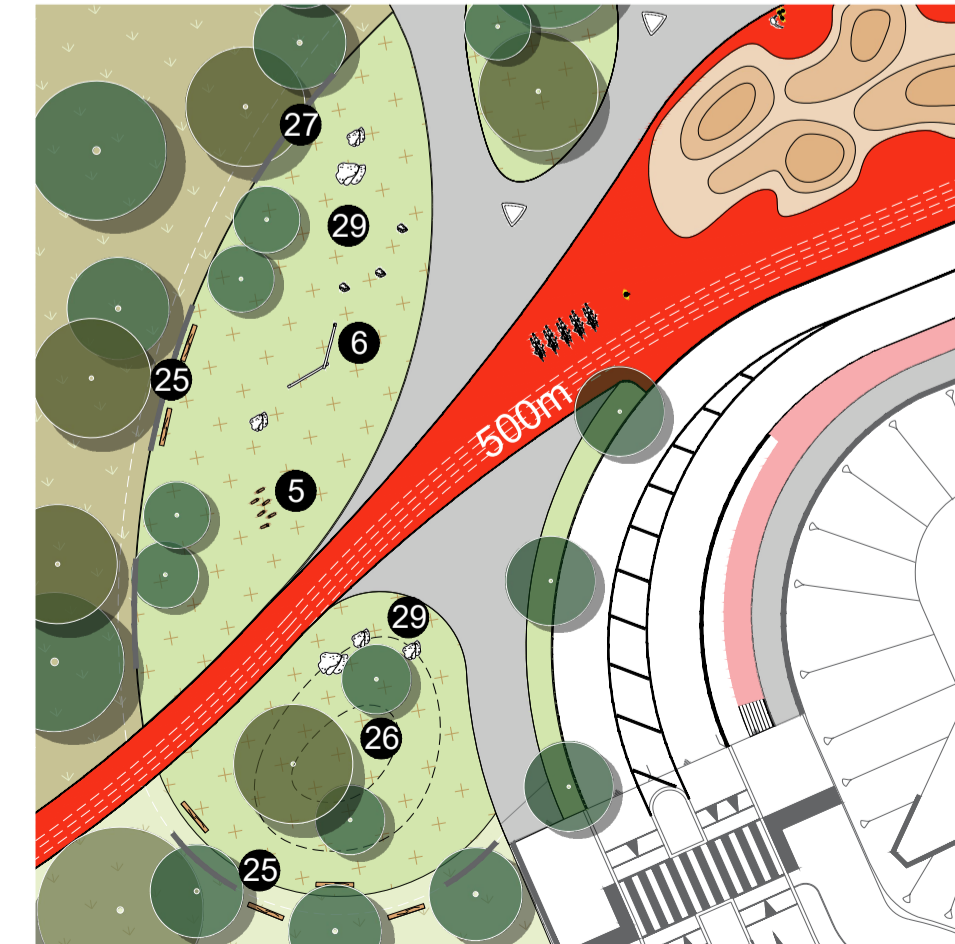
**PLAY EQUIPMENT SPECIFICATION**

<p><b>CocoWave Rope Swing</b> 1</p> <p>General Product Information:                  Colour options: 01, 02, 03, 04, 05                  Dimensions (LxWxH): 2000x1000x1500                  Age group: 3-12                  Max capacity (users): 10</p>	<p><b>Two Towers with Bridge</b> 2</p> <p>General Product Information:                  Colour options: 01, 02, 03, 04, 05                  Dimensions (LxWxH): 3000x1500x1500                  Age group: 3-12                  Max capacity (users): 10</p>	<p><b>Entry Seesaw, 4 persons</b> 3</p> <p>General Product Information:                  Colour options: 01, 02, 03, 04, 05                  Dimensions (LxWxH): 2000x1000x1500                  Age group: 3-12                  Max capacity (users): 10</p>	<p><b>Agility Trail 9</b> 4</p> <p>General Product Information:                  Colour options: 01, 02, 03, 04, 05                  Dimensions (LxWxH): 2000x1000x1500                  Age group: 3-12                  Max capacity (users): 10</p>	<p><b>Stilts</b> 5</p> <p>General Product Information:                  Colour options: 01, 02, 03, 04, 05                  Dimensions (LxWxH): 2000x1000x1500                  Age group: 3-12                  Max capacity (users): 10</p>	<p><b>Double Balance Beam</b> 6</p> <p>General Product Information:                  Colour options: 01, 02, 03, 04, 05                  Dimensions (LxWxH): 2000x1000x1500                  Age group: 3-12                  Max capacity (users): 10</p>	<p><b>Explorer Ship, Medium</b> 7</p> <p>General Product Information:                  Colour options: 01, 02, 03, 04, 05                  Dimensions (LxWxH): 3000x1500x1500                  Age group: 3-12                  Max capacity (users): 10</p>
<p><b>Theatre &amp; Music Cottage</b> 8</p> <p>General Product Information:                  Colour options: 01, 02, 03, 04, 05                  Dimensions (LxWxH): 2000x1000x1500                  Age group: 3-12                  Max capacity (users): 10</p>	<p><b>Play Panel 4 - School</b> 9</p> <p>General Product Information:                  Colour options: 01, 02, 03, 04, 05                  Dimensions (LxWxH): 2000x1000x1500                  Age group: 3-12                  Max capacity (users): 10</p>	<p><b>The Wizard's Hideaway</b> 10</p> <p>General Product Information:                  Colour options: 01, 02, 03, 04, 05                  Dimensions (LxWxH): 2000x1000x1500                  Age group: 3-12                  Max capacity (users): 10</p>	<p><b>Carousel with Seats</b> 11</p> <p>General Product Information:                  Colour options: 01, 02, 03, 04, 05                  Dimensions (LxWxH): 2000x1000x1500                  Age group: 3-12                  Max capacity (users): 10</p>	<p><b>Dolphin Springer</b> 12</p> <p>General Product Information:                  Colour options: 01, 02, 03, 04, 05                  Dimensions (LxWxH): 2000x1000x1500                  Age group: 3-12                  Max capacity (users): 10</p>	<p><b>Bird Nest Swing</b> 13</p> <p>General Product Information:                  Colour options: 01, 02, 03, 04, 05                  Dimensions (LxWxH): 2000x1000x1500                  Age group: 3-12                  Max capacity (users): 10</p>	<p><b>Two Seat Swing</b> 14</p> <p>General Product Information:                  Colour options: 01, 02, 03, 04, 05                  Dimensions (LxWxH): 2000x1000x1500                  Age group: 3-12                  Max capacity (users): 10</p>

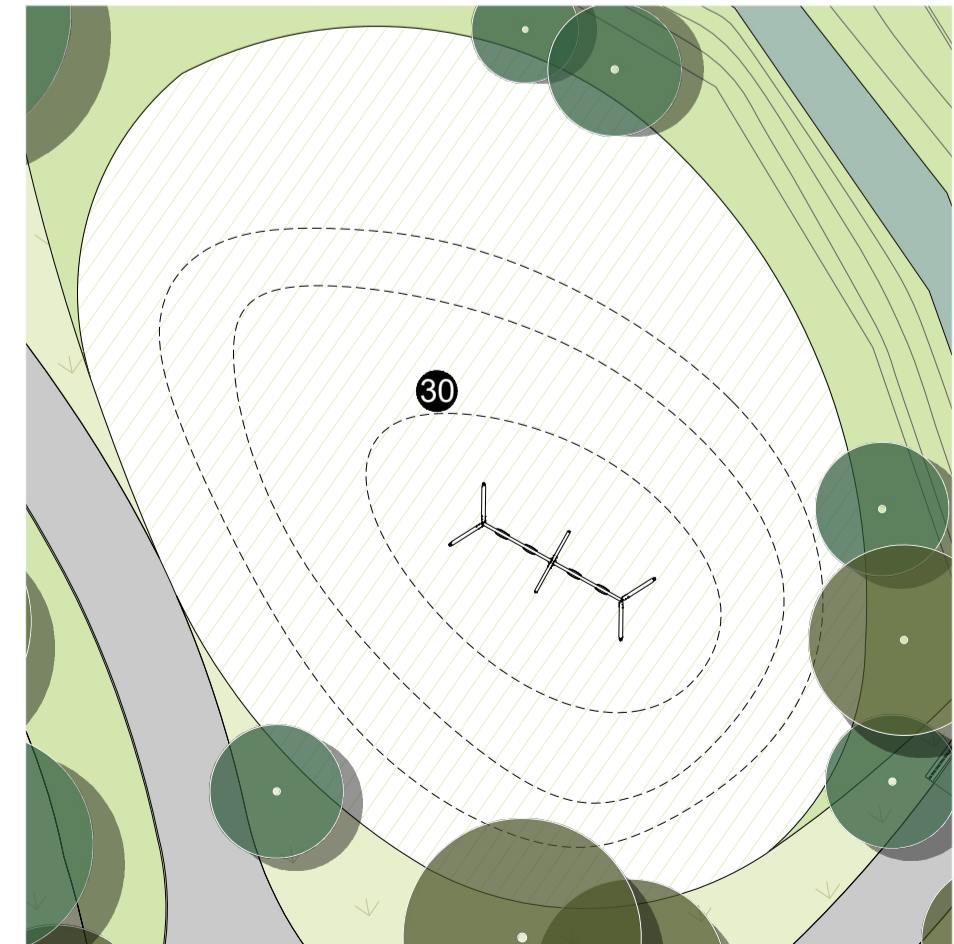
**D. SENSORY GARDEN @1:250**



**E. TYPICAL NATURAL PLAYGROUND @1:500**



**F. SWINGS AREA @1:250**



**CONTEXT PLAN @nts**



+ 087 910 1600  
+ info@gannonandassociates.ie  
+ Terenure Enterprise Centre  
17 Rathfarham Road, D6W

**gannon + associates**

G : 27/06/22 | Play Details | PS/AP | JG  
REV DATE | REVISION | | DRAWN | CHECKED

CLIENT  
Alanna Homes & Alcove Ireland Four Ltd.

PROJECT TITLE  
Barnhill Garden Village - Proposed development at Barnhill, Clonsilla, Co.Dublin

PROJECT ARCHITECT  
CDP Architects / CWOB Architects / Delphi Design

SHEET TITLE  
Play Details

SHEET NO.  
21154\_LP\_G\_PD

SCALE  
1/250

STAGE  
Planning Stage

SHEET SIZE  
A1

REVISION  
G

DATE  
June 2022

Copyright Gannon and Associates, 2022